

CORE5 LOGISTICS CENTER AT CODORUS CREEK

340,809 SF AVAILABLE

560 Busser Road, York, Pennsylvania 17406

Building Area	±340,809 SF	Truck Court	190'
Building Dimensions	1098' x 310'	Auto Parking	±184 Spaces
Building Configuration	Single Load	Trailer Parking	±77 Spaces
Acreage	±30.7 Acres	Dock Doors	±59 (9' x 10' insulated)
Column Spacing	56' x 50'	Drive-in Doors	±2 (14' x 16' ramped)
Clear Height	36'	Fire Protection	ESFR



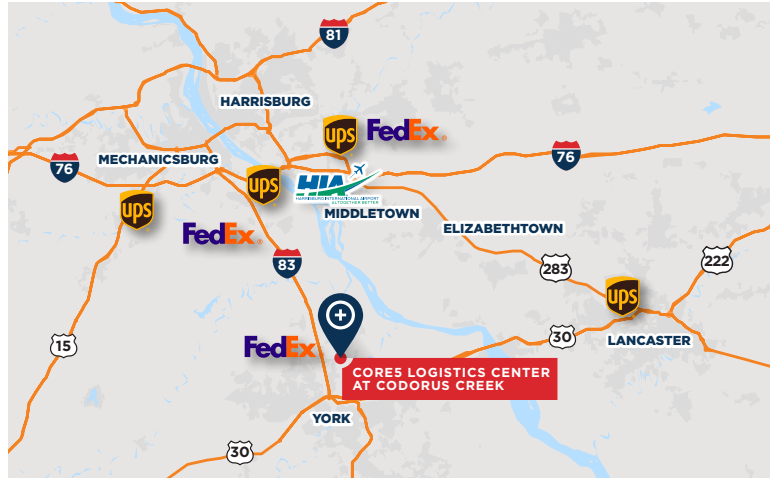
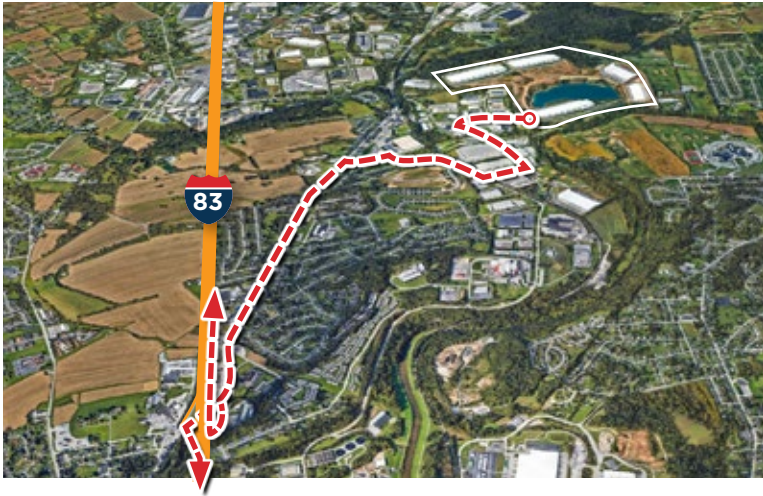
LEASING AGENT



DEVELOPER



I-83, Exit 22	2.8 miles
Route 30	3.1 Miles
York, PA	4.8 Miles
Harrisburg, PA	23 Miles
Lancaster, PA	29 Miles
Baltimore, MD	59 Miles
Philadelphia, PA	101 Miles
Washington DC	99 Miles
New York, NY	189 Miles



Paul Pontius
 Vice President Investments
 O 717.230.1839
 C 267.997.6851
 ppontius@c5ip.com

Gerry Blinebury
 Executive Vice Chair
 O 717.231.7291
 gerry.blinebury@cushwake.com

Adam Campbell
 Executive Vice Chair
 O 717.231.7292
 adam.campbell@cushwake.com

Allie Gaeta
 Senior Director
 O 717.231.7461
 allie.gaeta@cushwake.com

© Copyright 2023 Core5 Industrial Partners, LLC. All rights reserved. CORE5, CORE5 INDUSTRIAL PARTNERS, and the stylized "C" CORE5 INDUSTRIAL PARTNERS design / logo are service marks of Core5 Industrial Partners, LLC for its real estate services, namely, acquisition, rental, brokerage, development, leasing, and management of industrial real estate property. These marks may not be used without express permission of Core5 Industrial Partners, LLC.