

CORE5 LOGISTICS CENTER AT CODORUS CREEK

300,469 SF AVAILABLE

600 Busser Road, York, Pennsylvania 17406

Building Area	±300,469 SF	Truck Court	190'
Building Dimensions	1154' x 260'	Auto Parking	±198 Spaces
Building Configuration	Single Load	Trailer Parking	±75 Spaces
Acreage	74.974	Dock Doors	±55 (9' x 10' insulated)
Column Spacing	56' x 50'	Drive-in Doors	±2 (14' x 16' ramped)
Clear Height	36'	Fire Protection	ESFR



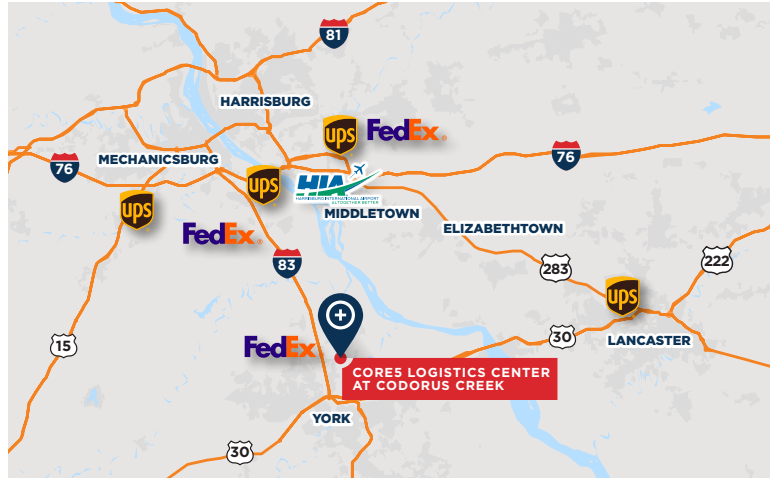
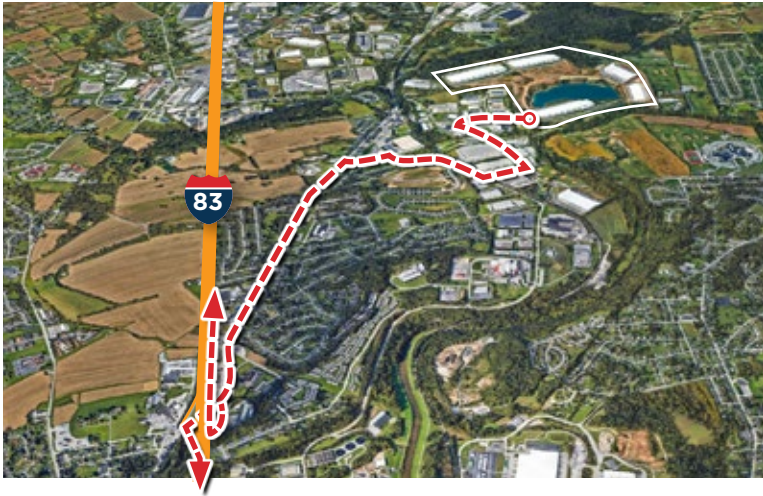
LEASING AGENT



DEVELOPER



I-83, Exit 22	2.8 miles
Route 30	3.1 Miles
York, PA	4.8 Miles
Harrisburg, PA	23 Miles
Lancaster, PA	29 Miles
Baltimore, MD	59 Miles
Philadelphia, PA	101 Miles
Washington DC	99 Miles
New York, NY	189 Miles



Paul Pontius
 Vice President Investments
 O 717.230.1839
 C 267.997.6851
 ppontius@c5ip.com

Gerry Blinebury
 Executive Vice Chair
 O 717.231.7291
 gerry.blinebury@cushwake.com

Adam Campbell
 Executive Vice Chair
 O 717.231.7292
 adam.campbell@cushwake.com

Allie Gaeta
 Senior Director
 O 717.231.7461
 allie.gaeta@cushwake.com