



# C5 75 LOGISTICS CENTER SOUTH

100 Final Mile Blvd., Unincorporated Boone County, Kentucky, 41094



LEASING AGENT

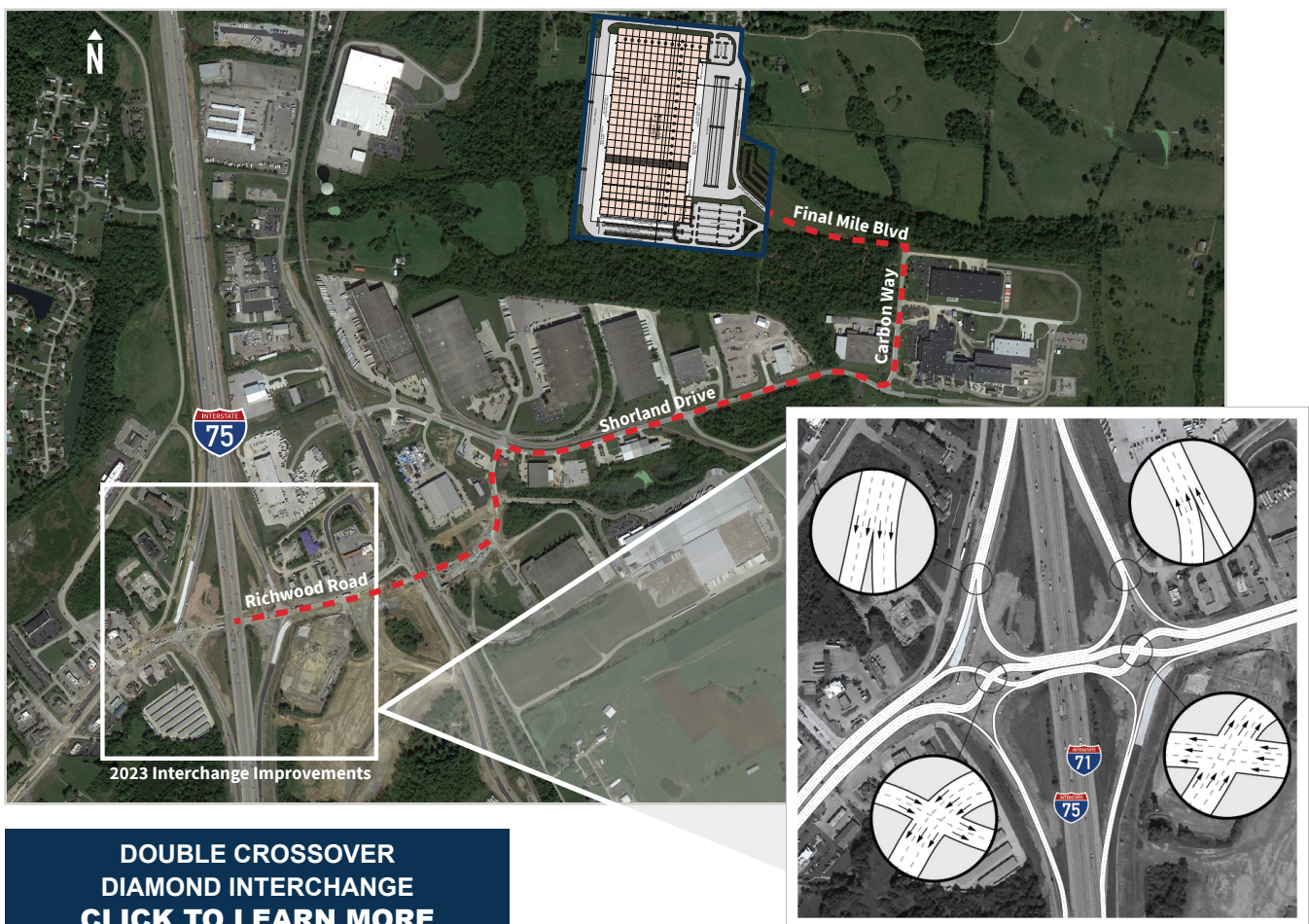


DEVELOPER

# C5 75 LOGISTICS CENTER SOUTH

100 Final Mile Blvd., Unincorporated Boone County, Kentucky, 41094

Core5 75 Logistics Center South is located in unincorporated Boone County, Kentucky, just over one mile from I-71/I-75, providing superior access to multiple markets along the I-75 corridor. With close proximity to Cincinnati/Kentucky International Airport and many distribution hubs, the property is ideally situated for business trades requiring local, regional and national distribution. New improvements (scheduled completion in 2023) are underway for a Double Crossover Diamond Interchange at the Richwood Interchange, providing direct access to C5 75 Logistics Center South.



## Benefits of a Double Crossover Diamond Interchange

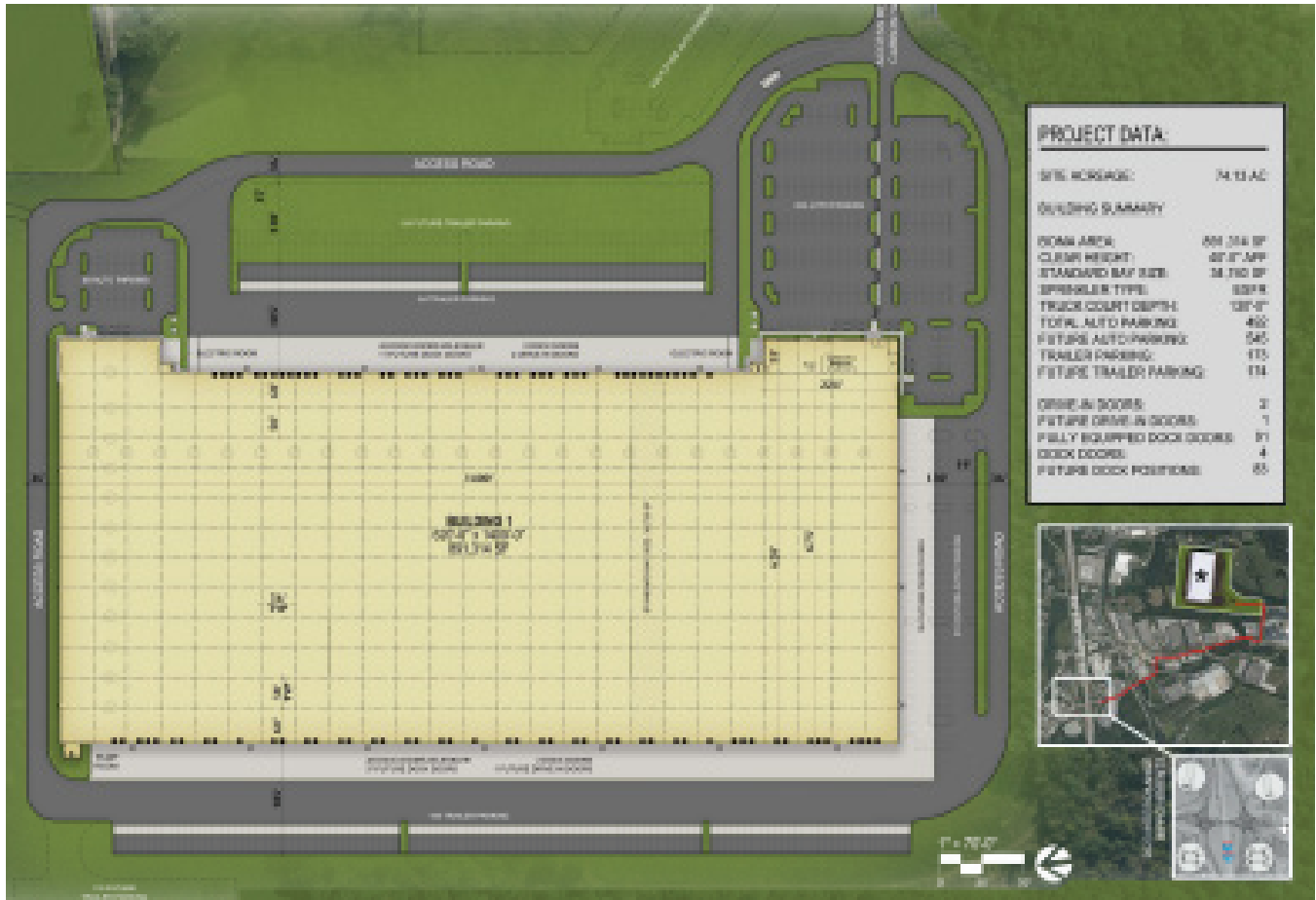
**Improved Safety:** Reduces the number of points where vehicles may cross paths

**Increased Efficiency:** Crossovers can operate with only two traffic signal phases, which allows the interchange to handle a greater volume of traffic and operate with less delay

**Easier Access to Freeway:** Design allows traffic to enter and exit the freeway without crossing opposing lanes of traffic

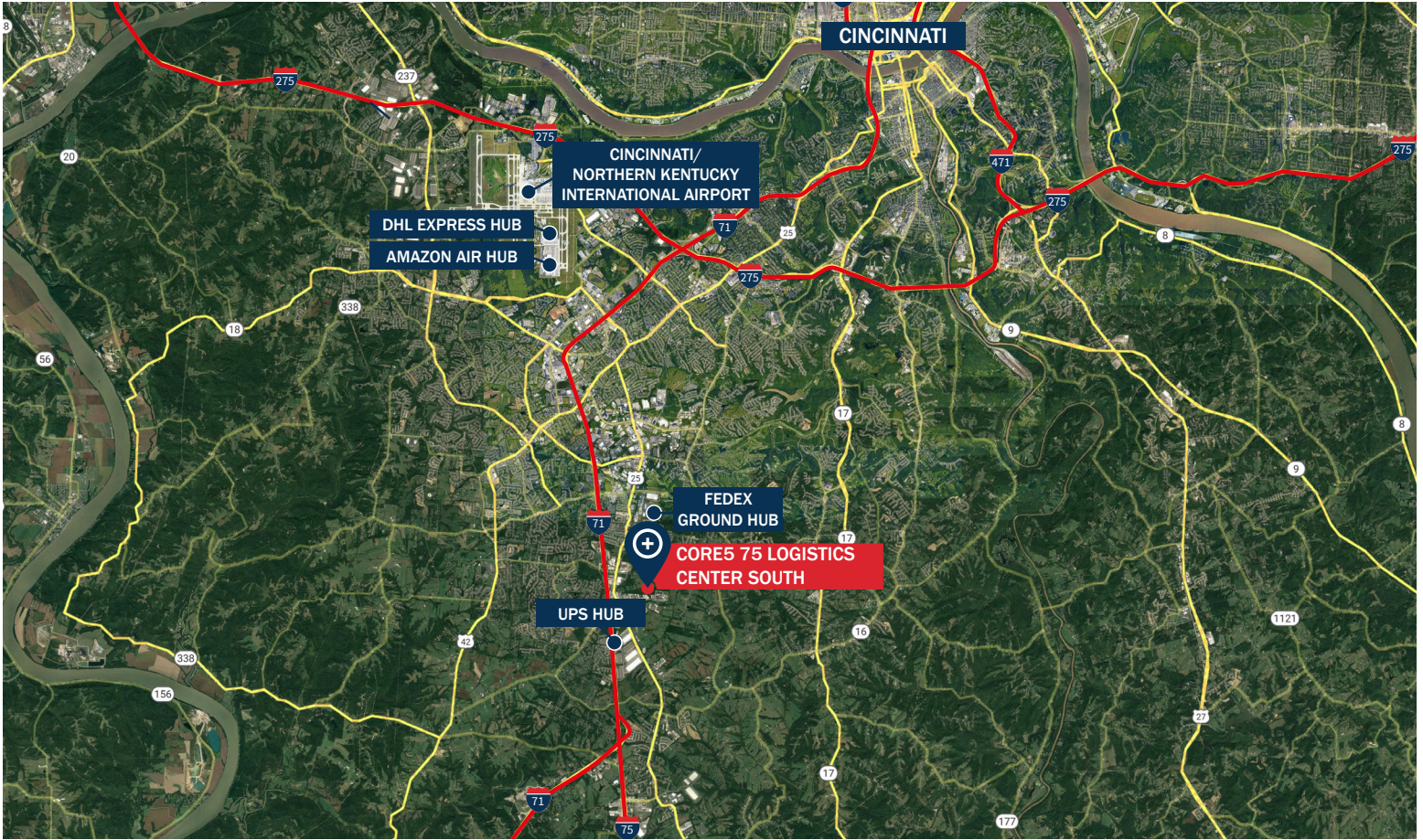
Source: [www.virginiaodot.org/innovativeintersections](http://www.virginiaodot.org/innovativeintersections)

## SITE PLAN



## BUILDING SPECIFICATIONS

<b>Square Footage</b>	891,314 SF (1400' x 620' plus 2 office bump outs)
<b>Site Area</b>	74.13 acres
<b>Configuration</b>	Crossdock
<b>Column Spacing</b>	56' wide x 50' deep
<b>Clear Height</b>	40' clear minimum
<b>Dock High Doors</b>	91 – 9' x 10' fully equipped dock doors (83 future dock positions)
<b>Drive-In Doors</b>	2 – 14' x 16' drive-in doors (1 future drive-in doors)
<b>Truck Court Depth</b>	130'
<b>Auto Parking</b>	492 auto spaces (545 future auto spaces)
<b>Trailer Storage</b>	173 trailer storage locations (174 future trailer parking spaces)
<b>Electrical</b>	277/480 volt, 3 phase
<b>Sprinkler</b>	ESFR sprinkler system



**MILES TO:**

<b>LOUISVILLE</b>	85 miles
<b>COLUMBUS</b>	125 miles
<b>INDIANAPOLIS</b>	130 miles
<b>NASHVILLE</b>	255 miles
<b>CHICAGO</b>	315 miles
<b>ATLANTA</b>	450 miles
<b>HARRISBURG</b>	490 miles
<b>KANSAS CITY</b>	590 miles



**Doug Armbruster**  
 Senior Vice President and Managing Director  
 O 859.287.3707  
 C 513.235.3933  
 darmbruster@c5ip.com



**Mark G. Volkman, SIOR**  
 Managing Director  
 O 513.241.4600  
 C 513.226.2076  
 mark.volkman@am.jll.com

**Brian M. Leonard**  
 Senior Managing Director  
 O 513.241.4600  
 C 513.257.5653  
 brian.leonard@am.jll.com