



# BOURBON LOGISTICS CENTER 3

Louisville, Kentucky



LEASING AGENT

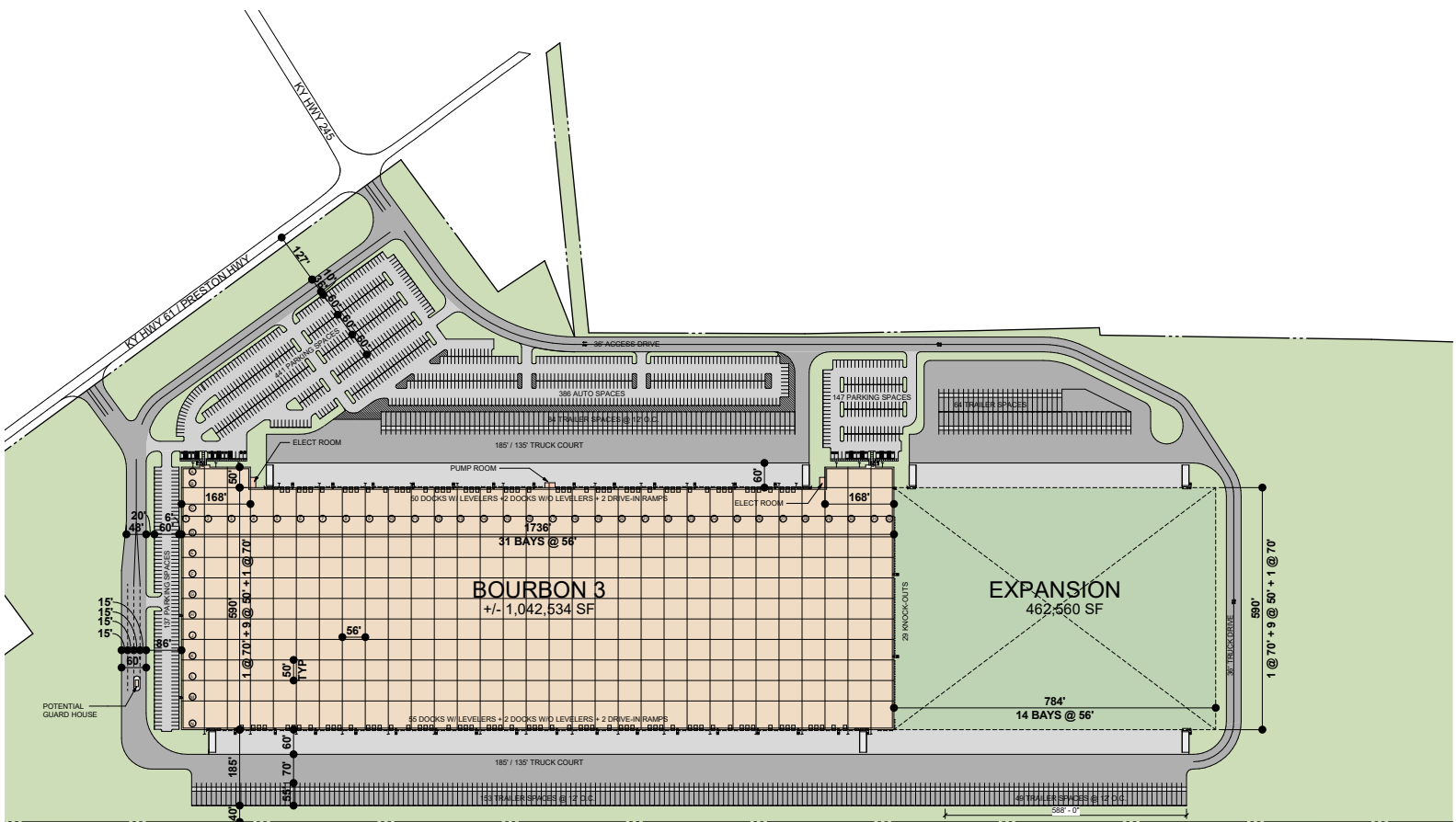


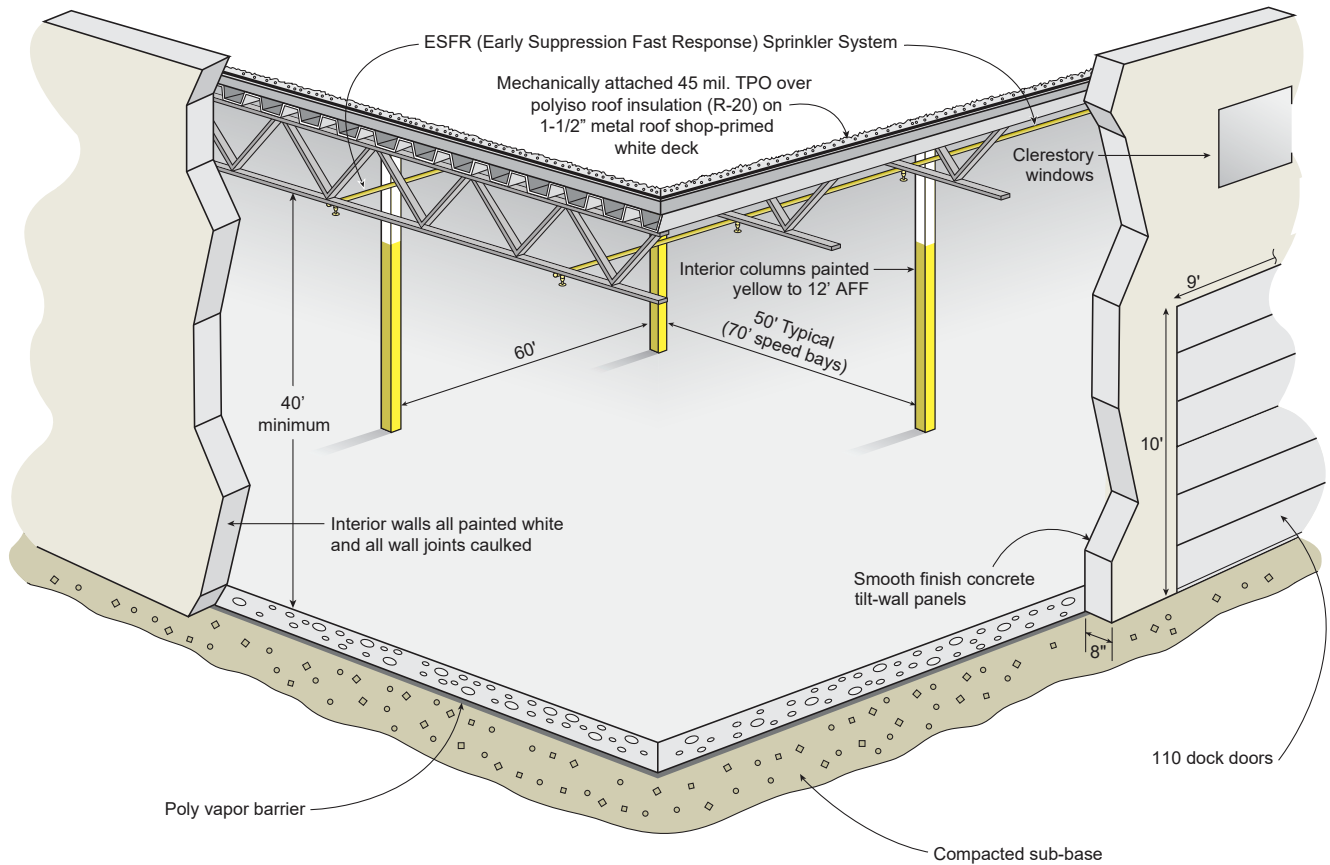
DEVELOPER

# BOURBON LOGISTICS CENTER 3

Louisville, Kentucky

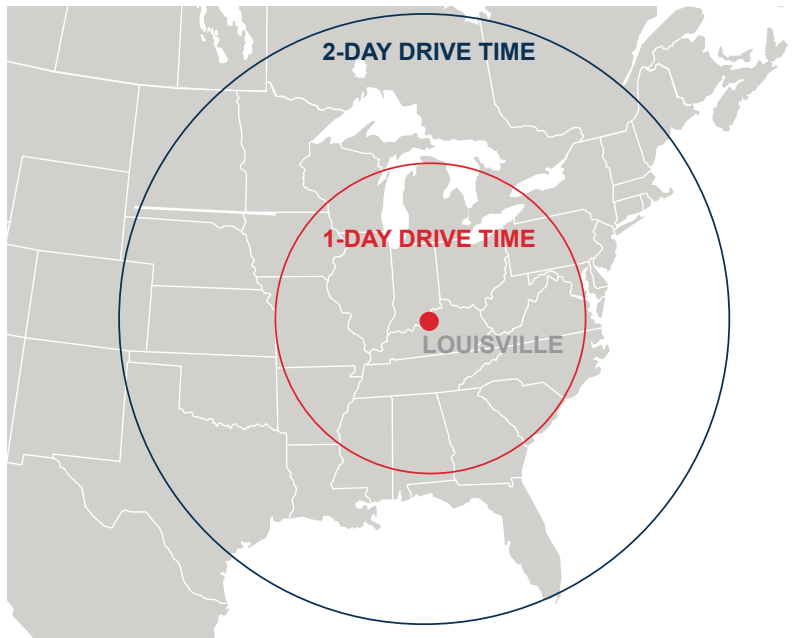
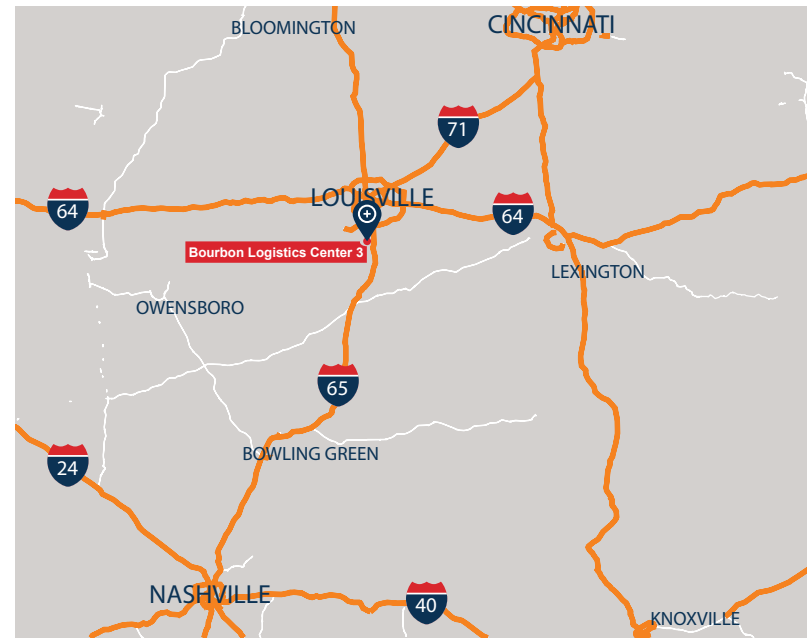
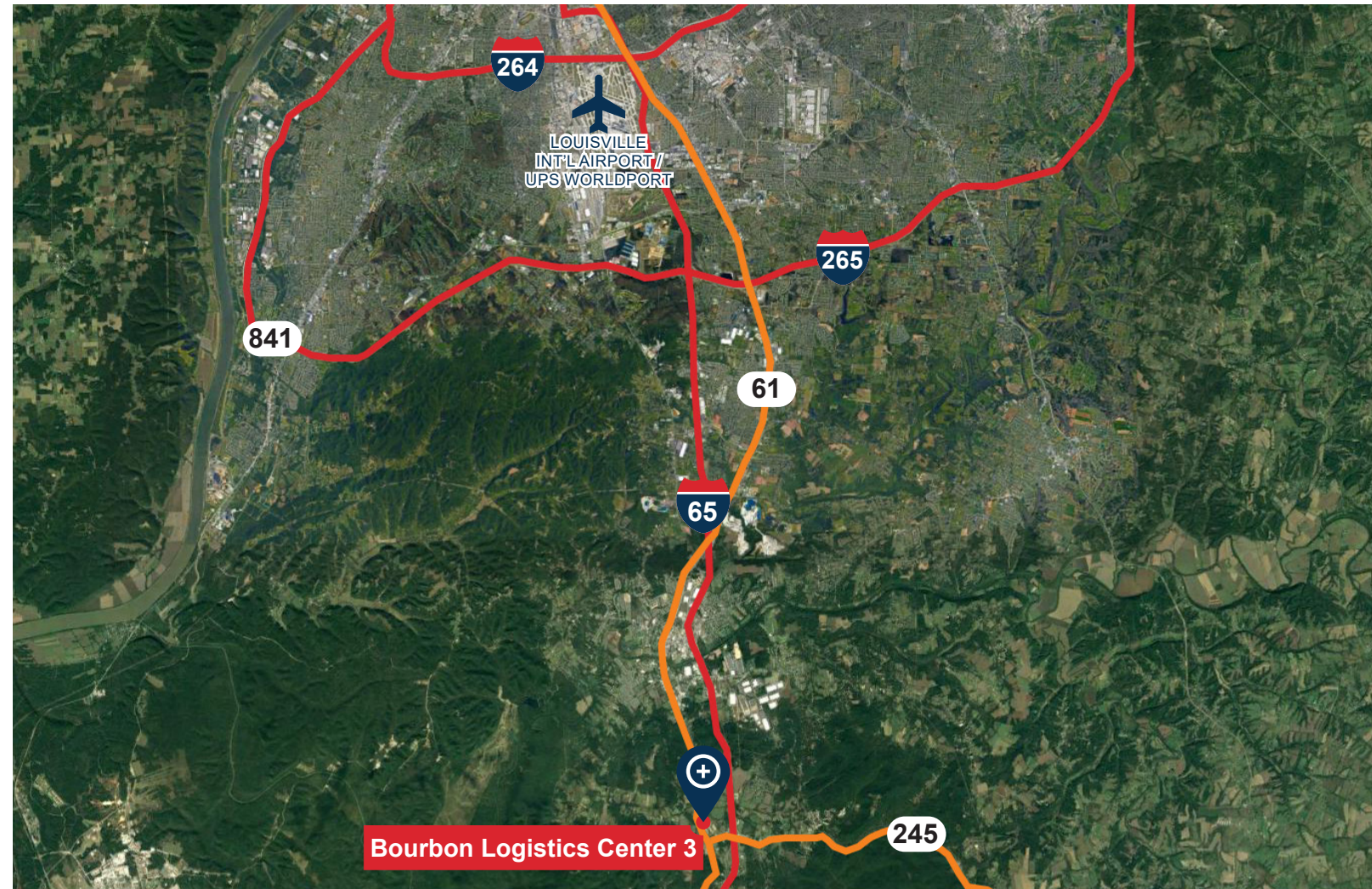
Bourbon Logistics Center 3 is positioned less than one mile from I-65 at KY-245 in Shepherdsville, Kentucky. The location provides superior access to multiple markets. UPS Worldport is 17 miles from the site, providing strategic logistics opportunities to the end-user.





## BUILDING SPECIFICATIONS - BOURBON 3

Square Footage	1,042,534 SF (expandable to 1,505,094 SF)
Site Area	113 acres
Column Spacing	60' wd x 50' dp (typical) with 70' speed bays
Clear Height	40'
Dock Doors	110
Drive-In Doors	4
Truck Court Depth	185'
Auto Parking	725 spaces (expandable to 1,111)
Trailer Storage	237 (expandable to 350)
Roof	TPO system (R-20)
Sprinkler	ESFR sprinkler system



**Doug Armbruster**  
 Senior Vice President and Managing Director  
 O 859.287.3707  
 C 513.235.3933  
[darmbruster@c5ip.com](mailto:darmbruster@c5ip.com)



**Powell Spears, SIOR**  
 Managing Director  
 O 502.394.2509  
 C 502.419.7391  
[powell.spears@am.jll.com](mailto:powell.spears@am.jll.com)

**Matt Hartlage, SIOR**  
 Executive Vice President  
 O 502.394.2517  
 C 502.807.5339  
[matt.hartlage@am.jll.com](mailto:matt.hartlage@am.jll.com)